



NIGHT TIME

If a child in your care, aged under 16, is sick or injured between 9pm and 7.30am, you should take them to the new, **specialist children's A&E unit** at the Lister hospital in Stevenage, which is open 24/7. The children's A&E department at the QEII hospital in Welwyn Garden City will be closed between these times.

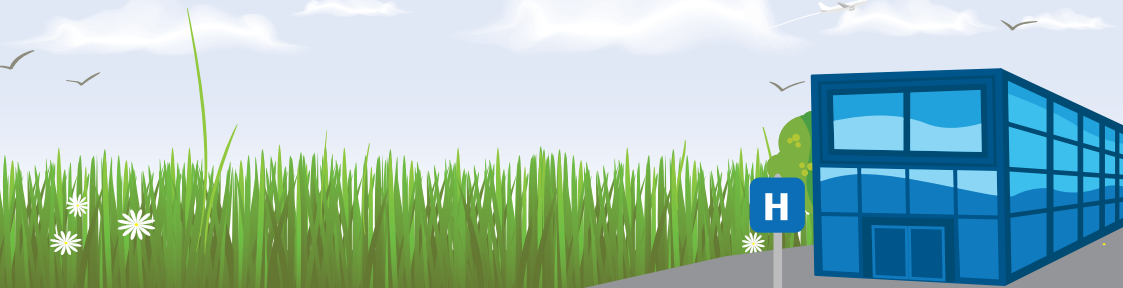


Important changes to children's overnight A&E services—from 1st August, 2008



DAY TIME

Between 7.30am and 9pm every day both the children's A&E department at the QEII and the new unit at the Lister will be open as usual.



Important contact numbers...

for all emergencies - **999**

NHS Direct, for health advice
over the phone - **0845 4647**

NHS Direct website - **www.nhsdirect.nhs.uk**



Children's A&E &
Assessment Unit (QEII) - **01707 365351**

Children's Community
Nursing Team (QEII) - **01707 365223**

Children's A&E (Lister) - **01438 784732**

Bluebell Children's Ward
(Lister) - **01438 781008**

Children's Community Nursing
(Lister) - **01438 781012**

Herts Urgent Care,
out of hours GP service - **08445 606606**

